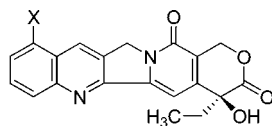


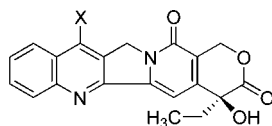
## ADDITIONS AND CORRECTIONS

**Rajeshwar P. Verma\*** and **Corwin Hansch**. Camptothecins: A SAR/QSAR Study (Published on the Web December 19, 2008) (*Chem. Rev.* **2009**, *109*, 213.)

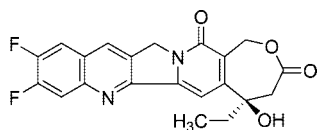
Because of a production error, the structures, Clog *P*, and CMR values of compounds **XXXV**–**XXXXIV** were not shown in the printed version of the paper (Conclusions section; p 233). The structures of those compounds (**XXXV**–**XXXXIV**) with their Clog *P* and CMR values are as follows:



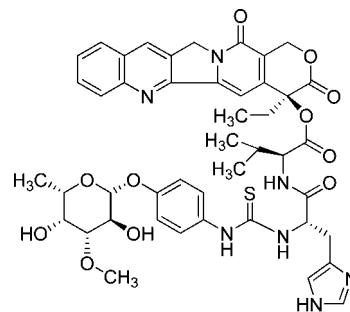
**XXXV** [Rubitecan; X = NO<sub>2</sub>]  
(Clog *P* = 0.76; CMR = 10.13)  
**XXXVI** [IDEC-132; X = NH<sub>2</sub>]  
(Clog *P* = 0.35; CMR = 9.89)



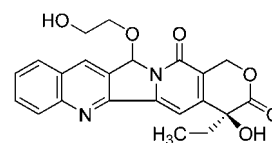
**XXXVII** [Gimatecan; X = CH=NOC(CH<sub>3</sub>)<sub>3</sub>]  
(Clog *P* = 2.23; CMR = 12.49)  
**XXXVIII** [Karenitecin; X = CH<sub>2</sub>CH<sub>2</sub>Si(CH<sub>3</sub>)<sub>3</sub>]  
(Clog *P* = 3.70; CMR = 12.73)  
**XXXIX** [CKD-602; X = CH<sub>2</sub>CH<sub>2</sub>NHCH(CH<sub>3</sub>)<sub>2</sub>]  
(Clog *P* = 1.17; CMR = 12.21)



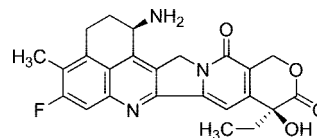
**XXXX** [Diflomotecan]  
(Clog *P* = 1.21; CMR = 10.02)



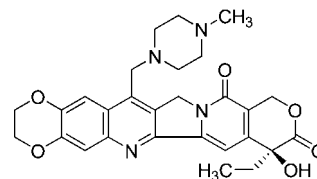
**XXXXI** [Bay 38-3441]  
(Clog *P* = 1.54; CMR = 23.84)



**XXXXII** [DRF-1042]  
(Clog *P* = 0.29; CMR = 10.76)



**XXXXIII** [Exatecan]  
(Clog *P* = 0.95; CMR = 11.58)



**XXXXIV** [Lurtotecan]  
(Clog *P* = 1.56; CMR = 13.92)

CR900027S  
10.1021/cr900027s  
Published on Web 02/18/2009